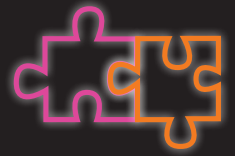


**NEED A DISTRACTION
AMID THE DOOM
AND GLOOM?**



Check out our daily puzzle page.

Travel Daily

Unscramble

HOW many words can you make out of these nine letters? Every word needs to include the centre letter, have four letters or more and not be a proper noun or a plural. You can only use each letter once.

H	D	R
A	G	N
Y	A	E

Good – 18 words
Very good – 27 words
Excellent – 36 words

NOTE: We've used Chambers Dictionary to decide what words are acceptable.

Funnies Flashback



WE'VE trawled through the **TD** Window Seat archives to give you a blast from the past. Here's some gems from 09 Aug 2013.

UP THERE on the list of the world's best reasons for a plane crash must surely be this one - the plane collided with a cow.

But alas, it happened on Tuesday this week, with a Lion Air jet this week hitting one of the bovines while it was landing at Jalaluddin Airport in Indonesia, at which point the aircraft skidded off the runway.

While there were no injuries reported among passengers, the cow didn't survive, with the pilot later saying he could smell "burning meat" as the plane ran over the unfortunate animal.

THE world's first Twitter-themed hotel has launched, on the Spanish island of Majorca.

The Sol Wave House Hotel in Magaluf encourages guests to interact using the #SocialWave hashtag, and they can also use Twitter to order room service or have their fridge restocked.

And by following the @SolWaveHouse page they can even keep tabs on new check-ins, in case there's someone they want to connect with.

ANSWERS 20 AUG

Pub quiz: 1 Western Australia, 2 Somali Sea, 3 South Africa, 4 Japan Airlines, 5 Baltic, 6 Paris Metro, 7 Sao Paulo, 8 Manhattan and Staten Island, 9 Dreamworld, 10 Queens Park Rangers, 11 Denpasar (den + pass + arrr)

Where in the world: Bridge of Sighs, Oxford, UK

1	5	3	4	9	7	8	2	6
9	2	8	6	3	1	4	5	7
7	4	6	2	5	8	3	1	9
3	1	9	8	7	4	5	6	2
4	6	2	9	1	5	7	8	3
8	7	5	3	6	2	1	9	4
2	3	1	5	4	6	9	7	8
5	8	4	7	2	9	6	3	1
6	9	7	1	8	3	2	4	5

Pub quiz

1. How many countries are larger than the state of Queensland?
2. After London and New York City, which city has the third-highest proportion of foreign-born residents?
3. Which national park makes up almost half of the Australian Capital Territory's land area?
4. Luxury cruise line Silversea Cruises is headquartered where?
5. Regional Express Airlines' entire fleet consists of planes made by what manufacturer?
6. The Sydney Fish Market sits on the foreshore of which bay?
7. Which airline was founded in 1959 as Polynesian Airlines?
8. What tree is depicted on the flag of Norfolk Island?
9. MGM Grand merged with what fellow hotel-casino operator in 2000?
10. On-demand transportation company Gett was formed in which country?

Where in the world?



THIS is just one colourful station in this city's metro system, which is sometimes known as the longest art gallery in the world.

The rail system includes artwork done by more than 100 artists.

This particular artwork was

done by Enno Hallek and Ake Pallarp and commemorates the nearby Olympic Stadium, which (get ready for your big hint) hosted the 1912 games.

Do you know where in the world this is?