

## Whose flag is this?



**THIS** flag was officially adopted in 1957 and its colours are the same in the country's coat of arms.

The white represents the country's rivers, the green symbolises the mountains and the red is for the blood shed in the many battles which have taken place in the nation.

The colours were mentioned in a coronation ceremony in 1608, but even earlier, they were associated with the monarchs.

The country has been ruled by many other nations and had different flags under each, but the colours and coat of arms have remained constant.

Do you know whose flag this is?

## Funnies Flashback



**WE'VE** trawled through the **TD** Window Seat archives to give you a blast from the past. Here's some gems from 16 May 2014:

**BORDER** crossings are never usually this fun.

A new service in the Spanish town of Sanlucar de Guadiana allows travellers to quickly transit into Portugal - by riding an exhilarating zip line.

The 'Limite Zero' ride costs just €15, and is much faster than the alternative, which is a ferry service into Alcoutim, Portugal across the Guadiana river.

The 800m ride lasts about a minute, but also crosses a time zone, meaning riders technically arrive in Portugal just over an hour after they set off.

**TRAVELLERS** needing to "spend a penny" while visiting the Chinese city of Chongqing have several rather unusual options.

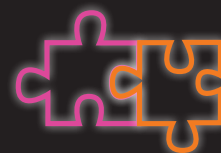
The city is nurturing a reputation within China for bizarre public toilets, with the Jiulongpo district now featuring conveniences in the shape of toy tanks, gigantic digital cameras and zoo animals.

Authorities have confirmed plans to erect 22 of the creative WCs across Chongqing, at least half of which are expected to be in place this year.

The dunnies appear to be themed according to their location, with one toilet near an electronics market in the form of a huge personal computer.

**NEED A DISTRACTION  
AMID THE DOOM  
AND GLOOM?**

Check out our daily puzzle page.



Travel Daily

## Pub quiz

- Which of the seven wonders of the ancient world is yet to be definitively located?
- New Zealand's Lake Wakatipu is shaped like which letter?
- Which city's musicians have produced the most number one hit singles?
  - Nashville
  - Liverpool
  - London
  - Los Angeles
- Titanic's one and only voyage departed from where?
- Once valued by some to be worth more than all the real estate in California combined is what attraction in Japan?
- What is the busiest railway station in the world?
- Boykambil and Santa Barbara are towns in which Australian city?
- What is Thailand's second-largest island after Phuket?
- Guanabara Bay is found in which country?
- The Castro District in California is one of the most prominent destinations of what kind of tourism?
- What city is this picture spelling out?



## Unscramble

**HOW** many words can you make out of these nine letters? Every word needs to include the centre letter, have four letters or more and not be a proper noun or a plural. You can only use each letter once.

E	D	T
R	H	O
D	E	N

**Good – 18 words**

**Very good – 27 words**

**Excellent – 35 words**

NOTE: We've used Chambers Dictionary to decide what words are acceptable.

### ANSWERS 17 DEC

Where in the world: Kistefos Gallery, Norway

Know your brands: 1 Fitness First, 2 David Jones, 3 Princess Cruises, 4 Triple J

Whose animal is this: Flamingo - Bahamas