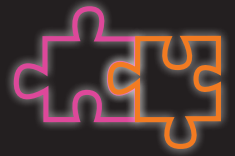


**NEED A DISTRACTION
AMID THE DOOM
AND GLOOM?**



Check out our daily puzzle page.

Travel Daily

Whose flag is this?



THIS country is known as the Land of the Thunder Dragon in its native language, and the sound of thunder throughout the nation's mountains and valleys is said to be the voice of dragons, hence the moniker.

However the flag design may not have originated from this, with similar designs used for centuries by a neighbouring country.

The dragon depicted on this flag carries jewels, which

symbolise the nation's wealth and perfection.

The dragon was originally green but was changed to white to stand for purity and the loyalty of various ethnic groups which live within the country.

Not much is known about the exact date of the flag's introduction, as the country was closed to the rest of the world for a long time, and is land-locked, limiting the need for a flag.

Do you know whose flag this is?

Funnies Flashback



WE'VE trawled through the **TD** Window Seat archives to give you a blast from the past. Here's some gems from 05 Feb 2014:

NICOTINE addicts rejoice - a new hotel search engine will help you locate accommodation around the world "where all our rooms are smoking!"

Smoketels.com brags that site users can save "endless hours" trying to locate a smoke-friendly hotel, pinpointing a search within just 60 seconds.

The portal says it has access to over 100,000 hotels worldwide.

British Airways has issued a unique challenge, seeking five contestants from around the world to race an A380 on the runway at Johannesburg.

The #ManVsPlane contest follows last year's "smash hit viral video" which featured South African rugby legend Bryan Habana beating the superjumbo over 200m from a standing start.

The winners will travel to Johannesburg on BA's new direct A380 flights from London Heathrow, which will commence operations next week.

Pub quiz

- Abolished in 1994, when was apartheid initially introduced in South Africa?
 - In the 1920s
 - In the 1930s
 - In the 1940s
- How many years before Europeans did Maoris settle in Auckland?
 - Roughly 400 years
 - Roughly 500 years
 - Roughly 600 years
- The Yorke Peninsula separates which two inlets of water?
- Which airline is headquartered in Atlanta, Georgia?
- Sri Lanka's two capitals are Colombo and which other city?
- Which city plays host to the United Nations' African headquarters?
- The traditional name of Rubibi refers to which Western Australian town?
- What is the largest city in Victoria's Grampians region?
- MGM Resorts International draws its name from which media company?
- The United Kingdom's Straits Settlements was dissolved after World War II, and now form parts of which three countries?

Unscramble

HOW many words can you make out of these nine letters? Every word needs to include the centre letter, have four letters or more and not be a proper noun or a plural. You can only use each letter once.

A	P	T
L	U	E
E	C	N

Good – 14 words
Very good – 21 words
Excellent – 28 words

NOTE: We've used Chambers Dictionary to decide what words are acceptable.

ANSWERS 22 OCT

Know your brands: 1 Sheraton Hotels & Resorts, 2 Domino's, 3 St George Bank, 4 Apple

Where in the world: Portree, Isle of Skye, Scotland

Whose animal is this: Red deer - Ireland