

## Icon under a microscope



**THIS** landmark is iconic and easily recognisable when you see the whole picture, but can you identify it from this small portion of the image?

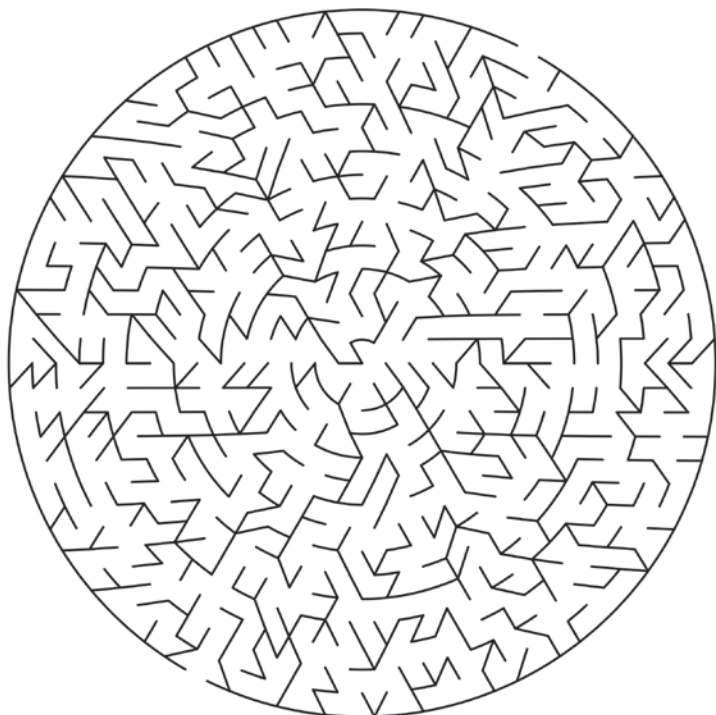
This incredible structure was

once part of a city, built in the late 10th century.

The site was one of the largest cities built by the civilisation, and this landmark pictured was used as a temple.

## A-maze-ing

**CAN** you find your way through this maze? Start at the top and finish at the bottom.



Keep up to date  
with Travel Daily  
on the go



Travel Daily



## Funnies Flashback



**WE'VE** trawled through the **TD** Window Seat archives to give you a blast from the past. Here's some gems from 15 Sep 2014:

**AVIATION** safety is no joke, but some people still don't get it.

A Southwest Airlines flight from Seattle Tacoma to Denver was delayed last Thu, which of all days was September 11, due to a passenger renaming his wi-fi hotspot as "Bomb on Board".

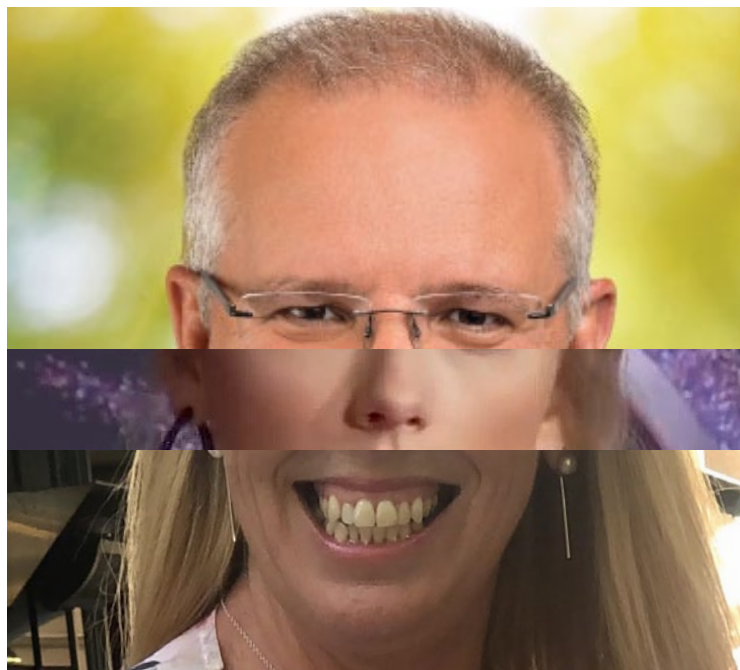
**ABC News** reported the signal was renamed "Bomb Location 19E" before being changed again to refer to the physical attractiveness of the cabin crew.

The pilots noticed the hotspot names and decided not to take the chance it was a joke, with authorities tracing the signal and detaining the man.

All bags on the flight were offloaded & rescreened before the plane started its journey.

The man was reportedly still in custody as of that evening, with no details of his charge public.

## Famous faces



**THERE** are three different faces that make up this picture.

They are a mixture of famous celebrities and travel names.

Can you figure out who the

eyes, nose and mouth in this picture belong to?

And don't worry if you can't guess them all, two out of three ain't bad!

ANSWERS 23 JUL  
Icon under a microscope: Temple of Kukulkan, Chichen Itza, Mexico  
Celebrity faces: Eyes - Scott Morrison, Nose - Taylor Swift, Mouth - Susan Haberie, The Inspire Collective