

Where in the world?

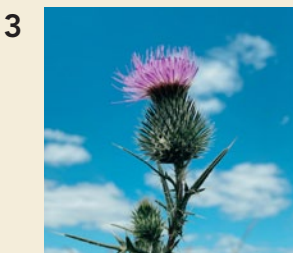
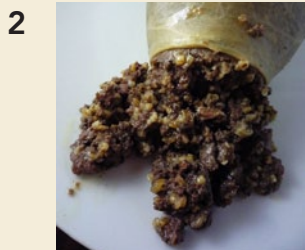


THIS tower's elaborate honeycomb structure rises 16 storeys into the air and consists of 154 flights of stairs, 2,500 steps and eight landings which visitors can climb across. The structure was modelled after Indian stepwells, and can hold 1,000 people at a time,

though it is currently closed to the public. From the top visitors have views of the nearby river, which gives the precinct this structure is located in its name. Do you know the name of this and where in the world you could find it?

Pick the nation

COUNTRIES have unique geography, ethnicities and cultures which come together to often form very distinctive symbols. Based off the four different symbols and famous faces, see if you can figure out which country they represent.



Pub quiz

1. Magnetic Island is located off the coast of what city?
2. The 2023 Rugby World Cup will be held where?
3. What is the largest river on the Cape Yorke Peninsula?
4. Flying Fish Cove is the main settlement in which Australian overseas territory?
5. Victoria Falls is a waterfall located on what river?
6. True or false: the Appalachian Mountains stretch into Canada?
7. Mulgupin is the traditional name of what Queensland island?
8. In which Adelaide neighbourhood was a coronavirus cluster thought to have formed last Nov, before it was revealed a worker at a local pizzeria lied about the nature of his job there?
9. The term "six flags over Texas" refers to the six sovereign states that have ruled over the region – what are they?
10. Bjorvika, Enerhaugen and Tjuuvholmen are all neighbourhoods in which European city?

Sudoku

MEDIUM

THE aim of Sudoku is to complete the entire grid using the numbers 1-9. Each number can only be used once in each row, once in each column, and once in each of the 3x3 boxes.

			3	1	6	5	7	
	1				4			
								9
	9	8		3	7		6	4
		4	6		1	9		
2	6		4	9		7	3	
1								
			8				4	
	5	3	1	6	2			

www.sudokuoftheday.com – visit them and get a new Sudoku every day!

ANSWERS 21 JUN

Where in the world: The Vessel, New York, United States

Pub quiz: 1 Townsville, 2 France, 3 Jardine River, 4 Christmas Island, 5 Zambezi River, 6 True, 7 Moreton Island, 8 Woodville, 9 Spain, France, Mexico, the Republic of Texas, the United States of America and the Confederate States of America, 10 Oslo

Pick the nation: Scotland

8	4	9	3	1	6	5	7	2
7	1	5	9	2	4	3	8	6
6	3	2	5	7	8	4	1	9
5	9	8	2	3	7	1	6	4
3	7	4	6	8	1	9	2	5
2	6	1	4	9	5	7	3	8
1	8	6	7	4	9	2	5	3
9	2	7	8	5	3	6	4	1
4	5	3	1	6	2	8	9	7